

Air Preparation

B

Introduction

Combos

Filters

Coalescers

Regulators

Filter / Regulators

Lubricators

Accessories

P31 Mini Series

40mm body width
 1/4" Ported

Flows up to:	dm ³ /s	(SCFM)
Filter	12	(25)
Coalescer	2	(4.2)
Regulator	30	(64)
Filter/Regulator	14	(30)
Lubricator	13	(28)

Features:

- Space saving integral gauge
- Manifold style regulators available
- OSHA compliant shut-off valves
- Soft-Start & Quick Dump valves
- Electronic Proportional Regulator



P32 Compact Series

60mm body width
 1/4", 3/8", & 1/2" Ported

Flows up to:	dm ³ /s	(SCFM)
Filter	38	(80)
Coalescer	11	(23)
Regulator	67	(142)
Filter/Regulator	64	(136)
Lubricator	47	(100)

Features:

- Manifold style regulators available
- OSHA Compliant shut-off valves
- Soft-Start & Quick Dump valves
- Electronic Proportional Regulator



P33 Standard Series

73mm body width
 1/2" & 3/4" Ported

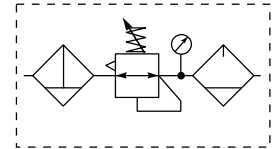
Flows up to:	dm ³ /s	(SCFM)
Filter	48	(102)
Coalescer	20	(42)
Regulator	100	(212)
Filter/Regulator	98	(208)
Lubricator	68	(144)

Features:

- OSHA Compliant shut-off valves
- Soft-Start & Quick Dump valves (Utilizes P32 size only)
- Electronic proportional regulator (Utilizes P32 size only)

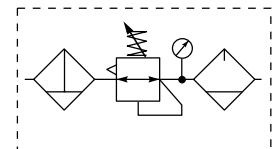


Popular Combinations



Filter + Regulator + Lubricator Combinations + Poly bowl
5 micron element, 8 bar (116 psig) Regulator + Gauge and Wall Mounting Brackets
Inlet pressure 10 bar (145 psig), Secondary pressure 6.3 bar (91.3 psig),
1 bar (14.5 psig) pressure drop.

Port size	Flow		Manual drain	Weight	Auto drain	Weight
	dm ³ /s	(scfm)				
1/4"	20	42	P32CB92GEMNGLNW	1.29 kg (2.84 lbs)	P32CB92GEANGLNW	1.29 kg (2.84 lbs)
3/8"	32	68	P32CB93GEMNGLNW	1.29 kg (2.84 lbs)	P32CB93GEANGLNW	1.29 kg (2.84 lbs)
1/2"	40	85	P32CB94GEMNGLNW	1.29 kg (2.84 lbs)	P32CB94GEANGLNW	1.29 kg (2.84 lbs)



Filter/Regulator + Lubricator Combinations + Poly bowl
5 micron element, 8 bar (116 psig) Regulator + Gauge and Wall Mounting Brackets
Inlet pressure 10 bar (145 psig), Secondary pressure 6.3 bar (91.3 psig),
1 bar (14.5 psig) pressure drop.

Port size	Flow		Manual drain	Weight	Auto drain	Weight
	dm ³ /s	(scfm)				
1/4"	22	45	P32CA92GEMNGLNW	1.03 kg (2.27 lbs)	P32CA92GEANGLNW	1.03 kg (2.27 lbs)
3/8"	33	70	P32CA93GEMNGLNW	1.03 kg (2.27 lbs)	P32CA93GEANGLNW	1.03 kg (2.27 lbs)
1/2"	43	90	P32CA94GEMNGLNW	1.03 kg (2.27 lbs)	P32CA94GEANGLNW	1.03 kg (2.27 lbs)

Filter / Regulator coding
 (use with codes: A M)

Filter coding (use with combo codes: B F G). For multiple filters, repeat as needed	Regulator coding (use with combo code: B)	Lubricator coding (use with combo codes: A B)	Assembly configuration
--	--	--	------------------------

P 3 2

Combination		Thread type	
B/V + Combination	Q	BSPP	1
Combination + B/V	X	BSPT	2
Combination	C	NPT	9

Combination type*		Port size	
F/R+L	A	F+Fc+Fa	G
F+R+L	B	F/R+Fc	M
F+Fc	F	F+Fc1+Fc	Q
1/4		2	
3/8		3	
1/2		4	

* Combination type
 F = 5µ
 Fc1 = 1µ
 Fc = .01µ
 Fa = Adsorber

Bowl type	
Poly bowl with bowl guard	G
Metal bowl without sight gauge	M
Metal bowl with sight gauge	S

* Not available when using Lubricator.
Note: All bowl types are the same for each component.
Example: If a "G" is specified for a F+L, both units would get a poly bowl with bowl guard.

Element	
0.01µ Element	C
0.01µ Element with dpi	D*
5µ Element	E
5µ Element with dpi	F*
1µ Element	9
1µ Element with dpi	Q*
Adsorber	A

* Not available with F/R.

Drain type	
Auto drain	A
Manual drain	M

Relief / Adjustment	
Non-rising knob relieving	N

Adjustment range	
With round gauge	
2 bar; 30 psig; 0.2 MPa	Z
4 bar; 60 psig; 0.4 MPa	M
8 bar; 125 psig; 0.8 MPa	G
17 bar; 250 psig; 1.7 MPa	J [§]
Without gauge	
2 bar; 30 psig; 0.2 MPa	Y
4 bar; 60 psig; 0.4 MPa	L
8 bar; 125 psig; 0.8 MPa	N
17 bar; 250 psig; 1.7 MPa	H [§]

Lub type	
Oil mist standard sight dome	L
Drain type	
No drain; closed end	N

Mounting	
No bracket	A
Port blocks	C
Port blocks & wall brkt	D
Wall bracket	W

* Unit comes with 0-4 bar or 0-60 psig gauge respectively.
[§] Not available with poly bowl with bowl guard.

B

Introduction

Combos

Filters

Coalescers

Regulators

Filter / Regulators

Lubricators

Accessories